

Contents

GENERAL INFORMATION	P1
Main Feature	P1
For your Safety	P2
Unpacking	P3
General Operation	P3
RCU	P4
Rear Panel	P5
INSTALLATION	P6
WELCOME PAGE	P7
MAIN MENU	P9
1. Channel Search	P8
2. Installation	P12
3. Setup	P13
4. Tools	P17
TROUBLE SHOOTING	P18

GENERAL INFORMATION

A Digital Satellite Receiver is a convenient product that allows you to view a variety of programs provided through satellite. This user's guide covers the installation of the DSR and the necessary steps to implement various features. This also explains special features available only in this DSR in detail, which will allow you to make full of these feature.

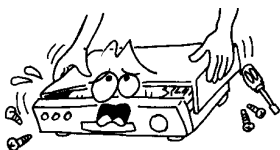
Information confirmed in this document is subject to change. We reserves the right, without notice, to make change in product design or performances as progress in engineering manufactory or technology may warrant.

Main Feature

- MPEG-2 digital & fully DVB-T compliant
- 400 channels TV and Radio programmable
- 1 different favorite groups selection
- On Screen Display with two languages (English, Greek)
- Fully support to 7 days Electronic Program Guide (EPG)
- Picture in Graphics (PIG) support
- 256 colors On Screen Display
- Channel search in automatic and manual
- Various channel editing function (favorite, move and lock)
- Parental control for channels
- Plug and Play installation, with an ease to use Menu System
- Software upgrades through RS232 port
- 1 sleep timer
- Subtitle support DVB EN300743 and EBU
- Teletext support DVB EN300472 by OSD
- Support Logic Channel Number (LCN)
- Active Antenna Power supply control
- Display the detail information of the active channel with signal level & quality indication
- Support 16:9 and 4:3 TV aspect ratios, by Pan & Scan and Letter Box conversion
- NTSC/PAL Converting Automatically and Manually
- Game

GENERAL INFORMATION

For Your Safety



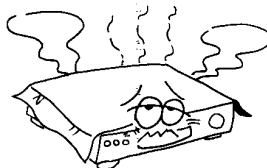
- To avoid electric-shock hazards, do not open the cabinet, refer servicing to qualified personnel only.



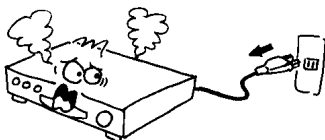
- Keep the receiver away from flower vases, tubs, sinks, etc., in order to avoid damaging the equipment.



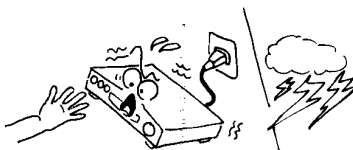
- Do not expose the receiver under the sunlight. And keep it away from the heat source.



- Do not block ventilation holes of the Receiver so that air can circulate freely.



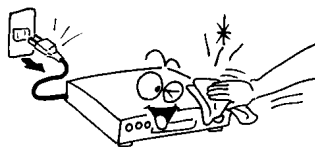
- When the abnormal phenomenon occur, you should cut off the power immediately.



- Do not touch the receiver during thunder, since that might create electric-shock hazards.



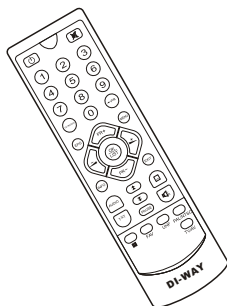
- Switch the receiver off whenever it remains out of service for an extended period.



- Be sure to turn the Receiver off and disconnect the AC power cord before cleaning the Receiver surface. If the surface is dirty, wipe clean with a cloth which has been dipped in a weak soap-and-water solution and wrung out thoroughly, and then wipe again with a dry cloth.

GENERAL INFORMATION

Unpacking



● Remote Control



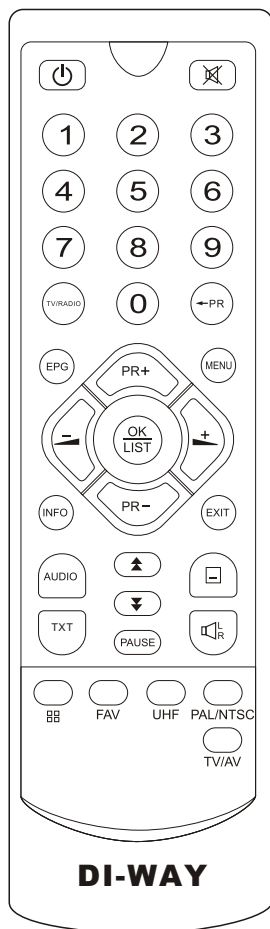
● Batteries

General Operation

- Throughout this manual you will notice that the everyday operation of the receiver is based on a series of user friendly on screen display and menus. These menus will help you get the most from your receiver, guiding you through installation, channel organizing, viewing and many other functions.
- All function can be carried out using the buttons on the RCU, and some of the function can also be carried out using the buttons on the front panel.
- The receiver is easy to use, always at your command and adaptable for future advances.
- Please be aware that new software may change the functionality of the receiver.
- Should you experience and difficulties with the operation of your receiver, please consult the relevant section of this manual, including the Problem Shooting, or alternatively call your dealer or a customer service adviser.

GENERAL INFORMATION

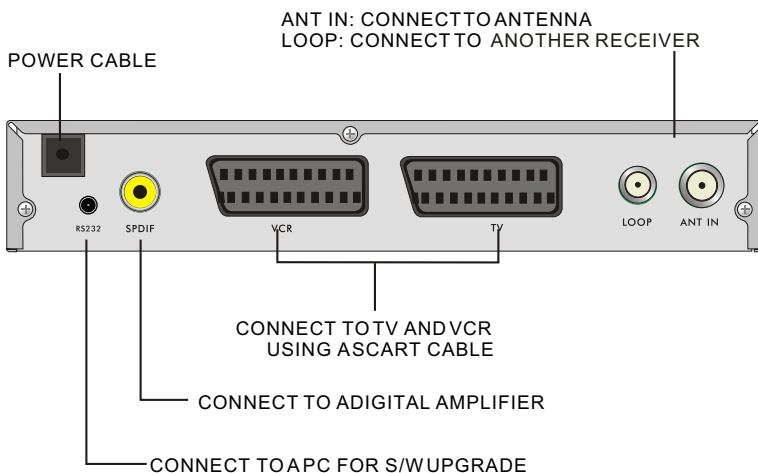
RCU



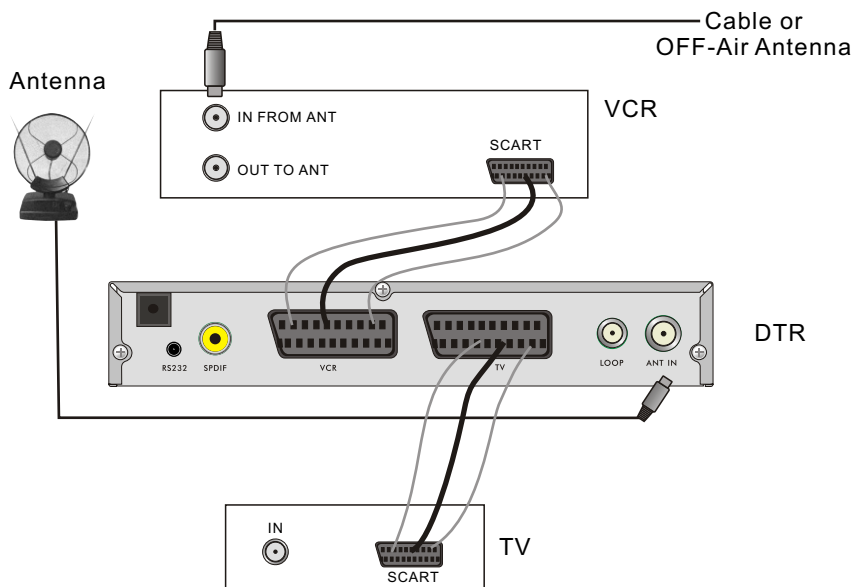
Key	Function
	Turns power ON/OFF of the DTR
	When watching a program, mute the sound
0~9	Enter number of the required menu item or select a program number to watch
TV/RADIO	Switches between TV and Radio mode
← PR	Switches back to previous program
FAV	Display the favorite program list
	Display program list
AUDIO	Choose audio mode
INFO	Shows information of the current program
MENU	Press this key one time to run menu on screen, and call command box
▲ ▼	Moves up / down a page in the program list
OK, LIST	Executes the selected item in the menu screen or enters the desired value in any input mode
PR+, PR-	When watching a program, change programs or move to the next higher or lower item in the menu
	When watching a program, adjust the volume or move to the left or right item in the menu
EXIT	Returns to the previous menu on the menu screen or escape from the menu
EPG	Calls up the EPG (Electronic Program Guide)
	Selects the different audio modes
TV/AV	Switches between TV and AV modes
	Switches to teletext or subtitle mode
UHF	No function
PAUSE	Press once to pause the screen picture, press once again to go to the normal mode
PAL/NTSC	Switches between PAL and NTSC modes Note: The operation may result in the slack of display on the screen.

GENERAL INFORMATION

Rear Panel

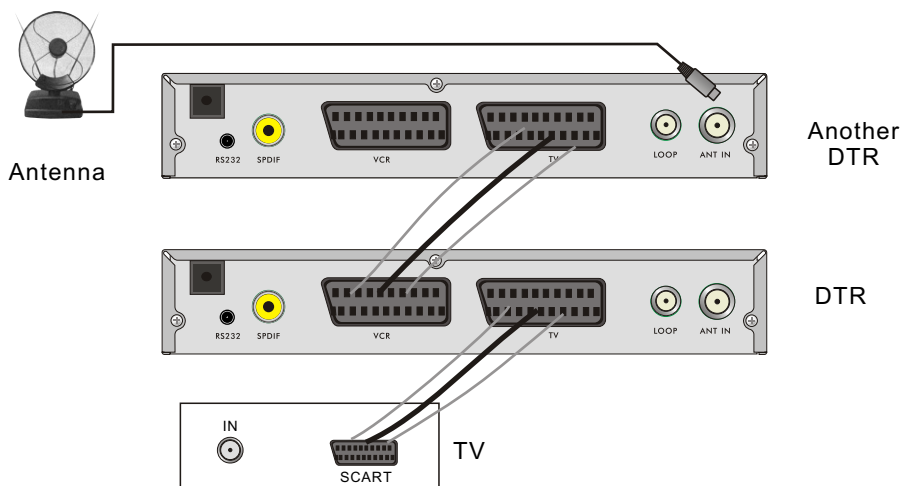


Connecting to TV using SCART support

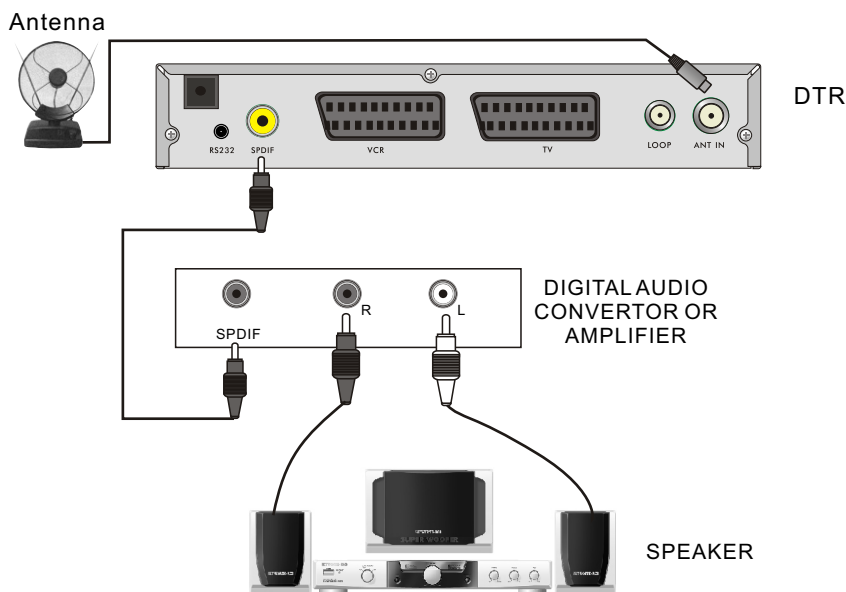


INSTALLATION

Connecting to another DTR



Connecting to Digital Amplifier

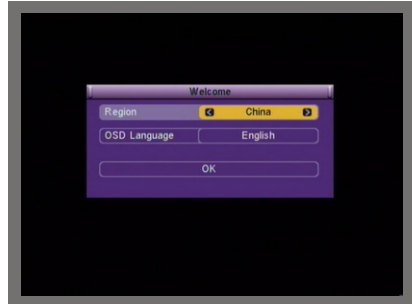


WELCOME PAGE

- When power on first time, it will show welcomepage like below.

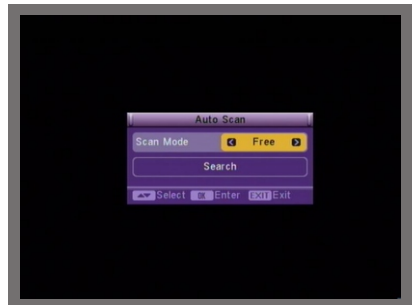
Press [Up/Down] key to move highlight to choose your choice.

- Press [Left/Right] key to move highlight to select **Region** and **OSD language**.



- Move highlight to [OK] option and press [enter] key to enter “Auto Scan” menu .

Press [Left/Right] key to move highlight to select **Scan Mode** between **Free** and **All**.



- After select **Scan Mode**, move highlight to **Search** option and press [enter] key to begin to auto scan.



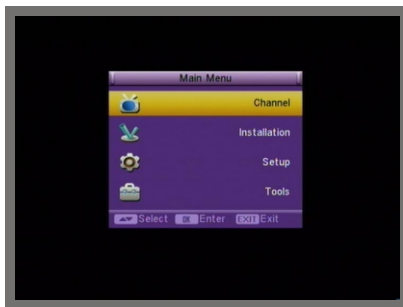
- Press [EXIT] key to exit this menu.

MAIN MENU

- When you press [MENU] key, you can enter **Main Menu**.

This menu consists of 5 major sub-menus as below.

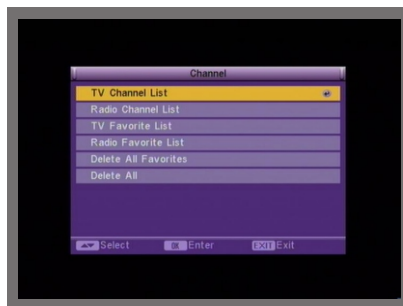
- Channel
- Installation
- Setup
- Tools



1. Channel

- Move highlight on Channel item and press [OK] key to enter Channel menu as below.

This menu has six sub-menus such as: **TV Channel list, Radio Channel List, TV Favorite List, Radio Favorite List, Delete All Favorites, Delete All.**



1.1 TV Channel List

- When you enter "Channel List" menu, the screen will display as below.

You can move highlight by press [Up/Down] key and preview the highlighted program in preview window beside the channel list.

You can press [Page Up/Page Down] key to implement the Pageup or Pagedown function.

You can press [OK] key or [EXIT] key to enter full screen mode.



- Press number keys [0]~[4] to carry out the corresponding functions that show you at the bottom of screen.

1.1.1 Favorite

Pressing number key [1] can make a favorite mark behind the highlighted program.

Pressing number key [1] once again can cancel the favorite mark.



1.1.2 Lock

Pressing number key [2] will open a message box for you to enter password, and the default password is "3330".

If you press the correct password, a lock mark will appear on the right of the channel name.

Pressing number key [2] again can cancel the lock.



1.1.3 Move

Pressing number key [3], there will be a moving mark on the right of the selected channel.

Then, you can move the selected channel to the position where you want to place it by press [Up/Down] key. And press [OK] key to confirm your decision.



1.1.4 Delete

Pressing number key [4] can make a delete mark behind the highlighted program.

Pressing number key [4] once again can cancel the delete mark.

Pressing [MENU] key or [EXIT] key, the system will show you a message box and ask you whether saving or not.

If you choose “yes”, all the channels which be marked will be delete.



1.1.5 Delete all

If you press number key [0], a dialogue will be showed to ask you whether you are sure to delete all channels.

If you choose yes and press [OK] key, all the channels will be delete.



1.2 Radio Channel List

Basically, the operation of “Radio Channel List” is same as “TV Channel List”. But there is only one different: In “Radio Channel List” mode, there is no video information, so it always display Radio’s logo in the preview window.

1.3 TV Favorite List

In “TV Favorite List”, it will show all the favorite channels in the list.

If there is no favorite channel, it will show “No Favorite TV Channel!”

Pressing number key [0], the system will show you a dialogue to ask you whether you are sure to delete all the favorite channels. If you choose yes, all the favorite channels will be removed from the list.



Press number key [2] to mark locked, it's same as it in the TV Channel List.

Pressing number key [4] can make delete mark on the right side of the highlighted channel. Pressing number key [4] again can cancel the delete mark.

Press [MENU] or [EXIT], all the favorites that be marked will be removed from the list.

1.4 Radio Favorite List

“Radio Favorite List” is same as “TV Favorite List”.

1.5 Delete All Favorites

When you move highlight on this option and press [OK] key, a message box will appear and ask you to choose.

If you choose yes, it will remove all the favorite channels (include TV and Radio favorite channels) from favorite list.



1.6 Delete All

This operation is same as 1.5, but it will delete all the channels including TV channels and Radiochannels.



2. Installation

When you enter **Installation** menu, the screen will display as below.

In this menu, you can press [Up/Down] key to select sub-menus and press [OK] key to enter the menu which is chosen.



2.1 Auto Scan

When you enter **Auto Scan** menu, the screen will display as below.

In **Scan Mode** item, press [Left/Right] key to choose scans all the channels or just scans free channels.

Move the highlight on the **search** option, and press [OK] key to start scanning.

Press [EXIT] key to exit this menu.



2.2 Channel Scan

When you enter **Channel Scan**, the screen will display as beside.

There are two scan modes for you. You can choose to scan by channel or by frequency.

When scan band is UHF and region is "China", the range of Ch Number is from 13 to 61. When scan band is VHF and region is "China", the range of Ch Number is from 1 to 12. (It's according to region.)



When you complete you configure, move highlight to **search** option, and press [OK] key to start scanning.

Press [EXIT] key to exit the scanning and save the current parameters.

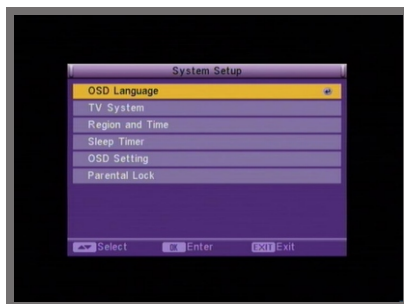
3. Setup

When you enter **System Setup** menu, you will see the screen like below.

It contains six sub-menus such as: **OSD Language**, **TV System**, **Region and Time**, **Sleep Timer**, **OSD Setting**, **Parental Lock**.

Press [Up/Down] key to select menu among all the items.

Press [OK] key to enter the selected item.



3.1 OSD Language

When you enter **OSD Language**, the screen will display as beside.

You can press [Left/Right] key to choose OSD Language among English, French, German, Italian, Portuguese and Spanish.



3.2 TV System

When you enter **TV System**, you will see the screen as beside.

1) Display Mode is used for select the screen-displaying mode. Now we provide three display mode that were Auto, PAL and NTSC. You can press [Left/Right] key to select each mode.

2) Aspect Ratio is used for switching the screen aspect ratio mode. Now we provide

several options: 4:3LB/4:3PS/16:9. You can press [Left/Right] key to select each mode circularly.

3) Video Output is used for switching the video output mode. Now we provide two modes: CVBS and CVBS+RGB. You can press [Left/Right] key to choose.

4) LCN Mode can control the channel whether sort by the sequence information in streams. You should press [Left/Right] key to choose between On and Off.



3.3 Region and Time

When you enter **Region and Time**, the screen will display as below.

1) Region: You can press [Left/Right] key to choose the country which you are in by the option of **Region**.

2) GMT Usage: This option is used to open the usage of GMT. You can press [Left/Right] key to switch "Off/User Define/by Region".

3) GMT Offset: This option is able just when the **GMT Usage** mode is **User Define**.

You can press [Left/Right] keys to switch "GMT Offset" value, and the range is "-12:00 ~ +12:00", increase each half hour progressively.

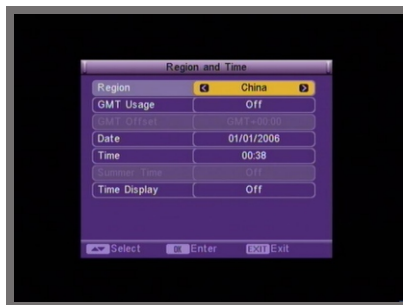
4) Date: This option is able just when the **GMT Usage** mode is **Off**. You can press [OK] key to begin to setup. Then you can setup it by the number key.

5) Time: The operation of this option is same as **Date**.

6) Summer Time: This item is able just when the **GMT Usage** mode is **by Region**. You can press [Left/Right] to choose.

7) Time Display: The item can control whether the time will display on the screen or not.

8) Exit: Press [EXIT] key to draw back from **Time** menu.



3.4 Sleep Timer

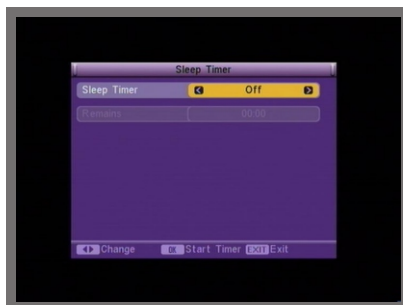
When you enter **Sleep Timer** you will see the screen like below.

Sleep Timer can set the time when the system can enter standby mode automatically.

You can use [Left/Right] key to switch the parameter which offered in this item. Then press the [OK] key to active it.

After you active it, the option of **remains** will show the remaining time. This option is only used to display but not be modified.

Press [EXIT] key to exit the current menu.



3.5 OSD Setting

When you enter OSD Setting, you will see the screen as below.

1) Subtitle Display: You can press [Left/Right] key to select **On** or **Off**. If the current channel has subtitle information, it will be showed up while this function is **On**. If this function is **Off**, there won't show up subtitle information even if the current channel has subtitle information.

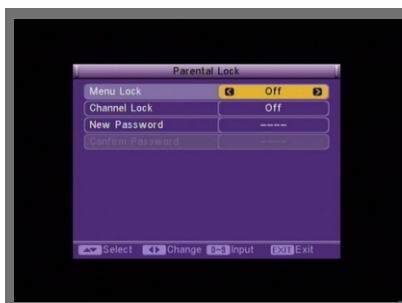


2) OSD Transparency: You can set the transparency of OSD. Press [Left/Right] key to select the values. There are five levels of the transparency: 10%, 20%, 30%, 40%, 50%, 60%, 70% and off.

3) Press [EXIT] key to draw back from current menu.

3.6 Parental Lock

When you choose the option of **Parental Lock** and press [OK] key, there will be a dialogue for you to input the password. The default password is 3330. If you input the correct password, you will see a screen like beside.



1) Menu Lock: Menu Lock determining that when user wish to enter "Installation" menu, whether have to input Password or not.

If the setting of "Menu Lock" is "Yes" which means user have to input password, set "No" means unlock.

2) Channel Lock: Channel Lock can set the channel which user want to lock.

3) New Password: You should use number keys to set the new password. When you enter 4 numbers, the highlight will skip to **Confirm Password** automatically. You should enter the password again to confirm it.

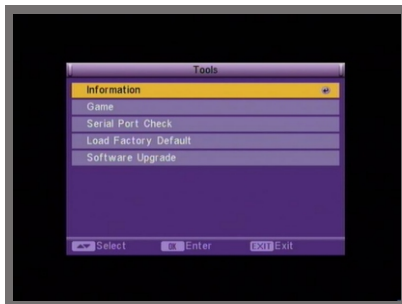
4. Tools

When you enter **Tools** menu, you will see the screen like below.

It contains five sub-menus such as:
Information, Game, Serial Port Check, Load Factory Default, Software Upgrade.

Press [Up/Down] key to select menu among all the items.

Press [OK] key to enter the selected item.

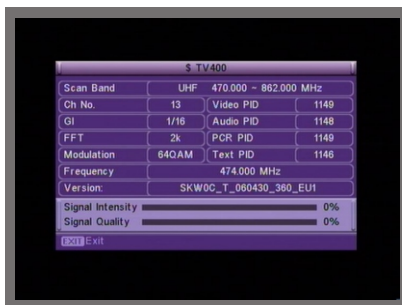


4.1 Information

When you enter **Information** menu, you should see the screen like it displays on the right.

This screen displays some parameters of information of current channel.

You should press [EXIT] key to cancel this menu.

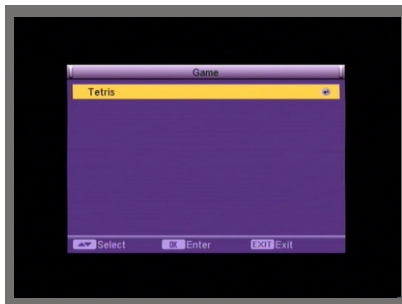


4.2 Game

When you enter Game menu like beside, you will find it provides games for you to play.

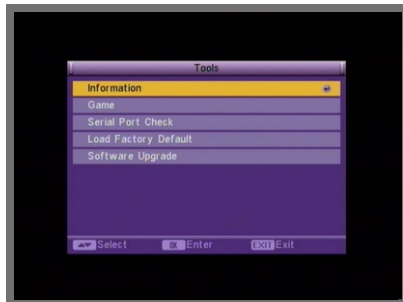
When you choose game and press [OK] key to enter.

Then you can play the game which you have chosen according to the clues on the screen.



4.3 Serial Port Check

This item is used to check serial port. Once **OK** key is pressed on this item, system will check the serial port automatically.

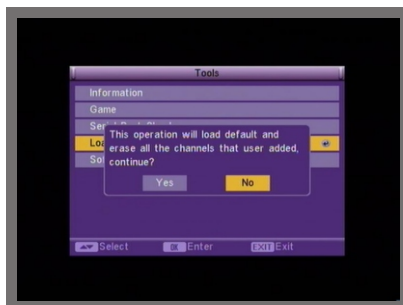


4.4 Load Factory Default

When you choose this item, and press [OK] key, there will be a message box to ask you whether you decide to continue.

If you choose **Yes**, all the parameters of this receiver will reset to the default value.

Note: Please use this function carefully.



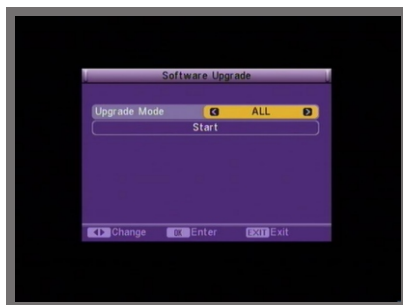
4.5 Software Upgrade

In this function, we offer a upgrade service for users.

We provide five Upgrade modes for you: ALL, CODE, LOGO, COUNTRYBAN, DATABASE.

Move highlight to **Start** and press [OK] key to start upgrade.

Press [EXIT] key to save the parameters and draw back.



TROUBLE SHOOTING

Problem	Possible causes	What to do
The display on the front panel does not light up.	Main cable is not connected.	Check that the main cable is plugged into the power socket.
No sound or picture, but the front panel shows red light.	The receiver is in standby mode.	Press the standby button.
No sound or picture.	The satellite dish is not pointing at the satellite.	Adjust the dish. Check the signal level in the Antenna Setup menu.
	No signal or weak signal.	Check the cable connections, LNB and other equipment connected between the LNB and the receiver, or adjust the dish.
	The satellite dish is not pointing at the satellite.	Adjust the dish.
	Signal is too strong.	Connect a signal attenuator to the LNB input.
Bad picture / blocking error.	Satellite dish is too small.	Change to a larger dish.
	LNB noise factor too high.	Change to an LNB with lower noise factor.
	The LNB is faulty.	Change the LNB.
The picture is not showed on the screen, when switching on.	The system is connected by RF leads.	Check the UHF channel fixed in your system and tune the UHF channel properly.
There is interference on your digital satellite channels, an existing terrestrial channel or video signal.	The system is connected by RF leads and the output channel of the receiver interferes with an existing terrestrial channels or Video signal.	Change the receiver output channel to a more suitable channel, or connect the system by SCART leads.
The RCU is not working.	Battery exhausted.	Change the batteries.
	RCU is incorrectly aimed.	Aim RCU at the receiver, or check that nothing blocks the front panel.

● **Note** : If you have tried all of the actions suggested above, without solving the problem, please contact your dealer or service provider.