

AZBOX S170 / ST710 / S720 / S700 /C710 - ACTUALIZAR SOFTWARE MEDIANTE UM COMPUTADOR



1º Download Azloader tool.

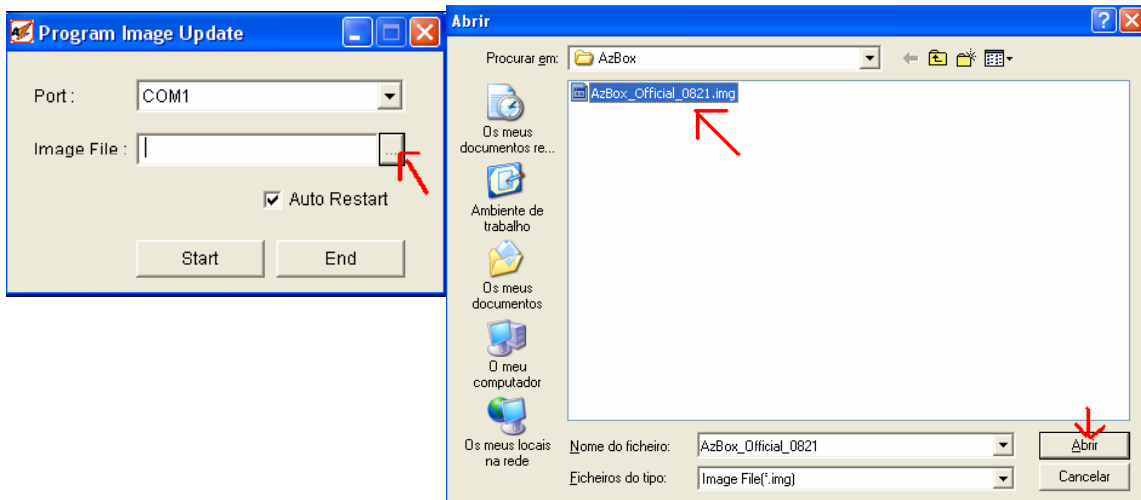
2º Download the latest available software.

3º Download both to one folder.

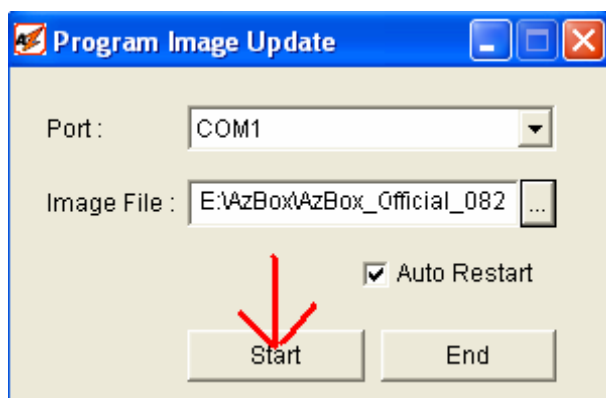
4º Turn the receiver to power off.

5º Connect the cable Rs232 (NullModem) between computer and Azbox. (If you have any doubt about this cable you can find connection scheme of this cable in receiver instructions book).

6º Open Azloader tool , set up the program with the correct COM port that you'll use, then click in [...] and browse among the folders of your computer till you get the folder where the downloaded software is (bin format), which downloaded in step 2. Select this software and then click Open.

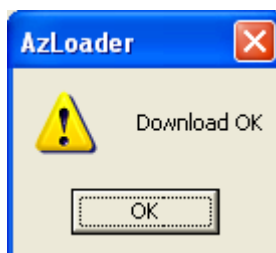


7° The next step is clicking Start.



8° Link the receiver to power on.

9° Wait that the operation finishes and the following message appears on computer:



The receiver will restart automatically.

ATTENTION: It's strongly recommended to do a reset to factory setting, when you switch software version. In order to this procedure please go to Menu -> System Setup -> Data Reset -> Factory Setting

